



MUSEUM EDUCATIONAL PROGRAM

All students of any grade are invited along with their instructors to participate in this hands-on learning experience about local and regional history. A combination of photographs, artifacts, outdoor exhibits, group discussion, and related classroom activities will help bring history to life and compliment any social studies or history course.

Tour options also available for non-student groups.
Contact us for information.

Langlade County Historical Society

404 Superior Street
Antigo, WI
54409

Phone: 715-627-4464

Email: lchs@dwave.net

Curator
Mary Kay Wolf

Program Director
Patricia Kennedy

Program Volunteer
Michael J. Clay



Langlade County Historical Society

School Tours

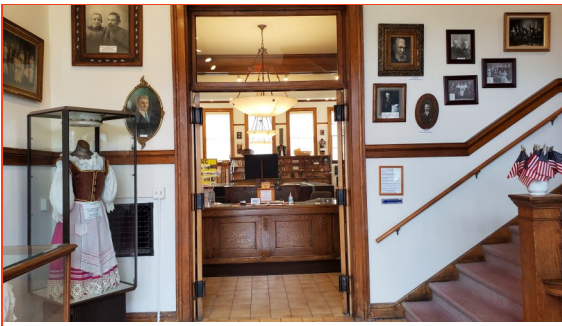
at the Museum



**Historical Learning
Experience for Students**

(April - October)

Visiting the Past, Enriching the Future



What To Expect

The tour will take students through the ground floor of the LCHS museums, covering:

- the Wisconsin Glaciation
- Menominee and Ojibwe tribal history
- Early European settlement
- the logging and railroad industries

The class will then tour the 440 Locomotive/Caboose and Deeglise Cabin.

The entire tour should take approximately 60-90 minutes. If you have time afterwards, students may freely roam the rest of the museum, ask more questions, and discuss what they've learned together.

ACTIVITIES

Throughout the tour, students will be able to participate in several hands-on activities, such as:

- Passing around artifacts, including traditional moccasins and beadwork.
- Tapping out Morse code on a telegraph key.
- Discussing historical artifacts and situations and how they relate to the present day.
- Receiving and punching a ticket as they board the train.

In-classroom activities and assignments recommended for after the tour are also available.



ABOUT THE MUSEUM

The LCHS Museum was built as a Carnegie Foundation library in 1905, and served as Antigo's public library until 1997. The Deeglise Cabin was the first home built in Antigo, in 1878, by founder Francis Deeglise and his compatriots. The 440 Locomotive is a Baldwin 2-8-0 steam engine built around 1900, and purchased from a museum in North Freedom, WI in 2005.

The LCHS is a non-profit organization that receives no public funding and relies entirely on donations to maintain its programs and facilities.

