

Spring 2020

LANGLADE COUNTY HISTORICAL SOCIETY



Ready to Start

Even though much of Wisconsin, including the museum, has been closed to the public the Langlade County Historical Society has been busy behind the scenes with remodeling plans. Plans developed by Rod Cox and Associates of Wausau have been approved by state regulators. We have been seeking a general contractor to oversee the project and hired JAS Builders of Wausau. They will be working with local subcontractors wherever possible.

We are preparing by moving displays, clearing space and now await a healthier environment and cooperation from the weather to begin outside construction on an

addition to provide elevator access as well as restrooms to all floors.

Remodeling of the interior will follow. It includes rearranging displays, relocating the Antigo Visual Arts Gallery, and creating a space for a Tourism Information Center. Replacing ceilings, lighting, and ductwork is also planned. How extensive these changes will be depend on our finances as fundraising continues.

Because of uncertainties about construction scheduling we will not hold our annual June rummage sale or summer railroad picnic at the museum. Scheduling of AVA

Gallery's exhibits and regular museum hours are tentative at the moment.



The north side of the museum will be undergoing a major transformation with the addition of a tower housing an elevator, restrooms, and an information lobby.

4-H Tree Toppers in the Museum



At a recent tour of the museum the 4-H Tree Toppers used a brochure guide prepared by Egan Trabant McKenna to look for clues about immigration to Langlade County. They then cooperated on a quiz on what they learned.

In early March, before social distancing became the norm, the 4-H Tree Toppers visited the museum. The theme for the evening was "Immigration and the Impact of Immigrants in Langlade County". About 30 4-H children, young adults, and parents spent the evening at the museum and toured the displays looking for clues about various immigrant groups in Langlade County. A brochure with questions and clues prepared by Tree Topper Egan Trabant McKenna made the tour into a fun game. We will make the brochure

available to all museum visitors and also plan to prepare more brochures on various topics with the help of Egan.

CURATOR:

Mary Kay Morrissey Wolf

DIRECTORS:

Dean Blazek
Fran Brown
Nancy Bugni
Glenn Bugni
Carol Feller Gottard
Chris Haedtke
Lisa Haefs
Joe Hermolin
Diane Zuelke

THANK YOU

Items Donated:

Tim Bera: Purple Heart and article about Karl Bera who lost his life in the Korean War

Richard Tews: Chamber pots

Monetary Donations:

Phillipe Pierros

Membership Renewals:

Fran Brown
Glenn & Nancy Bugni
Dede Cromer
Jeanne Darling
Robert Duerwachter
Judy Grimm
Chris Haedike
Sheila Hall
Shirley Harder
Jeff Holm
William Johnson
Mary Josvai
Ron & Judy Korn
William & Charlotte Kraft
Jeff & Cheryl Marx
Nancy Pelzer
Patricia Ratzlaff
Sandy Robrecht

New Membership:

Joyce Payne

Life-Time Member:

Kay Doran

To Let's Make History Project from Jan.2, 2020 to March 25, 2020

Individuals:

Rosemary Barnes
Fred Berner & Kay Schroeder
Dede Cromer
Kay Doran
Paul Grinde
Dr. Timothy & Susan O'Brien
Mike & Mary Winski

Businesses & Organizations:

bbjacks
Parsons of Antigo
Elwyn J Remington Foundation
White Lake Historical Society

LANGLADE COUNTY HISTORICAL SOCIETY

Working with Recollection Wisconsin

Our historical society continues to partner with Recollection Wisconsin in an effort to make many of our significant photos and documents available online. Recently we have added a major part of our photo collection: views of Antigo.

We have worked with Recollection Wisconsin since 2012 and seen it grow as a source of information. Researchers from as far away as Denmark and Switzerland as well as those from all over North America have used our material. For example, a Swiss researcher writing about French Swiss immigration to the U.S. made extensive use of our material about Francis Deleglise. In 2019

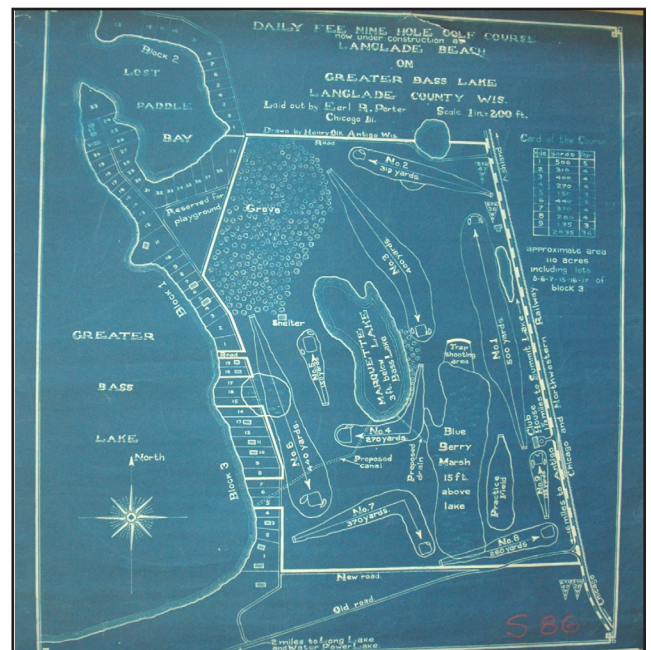
over 11,000 views of our collection were recorded.

Recently Recollection Wisconsin has formed an Education Advisory Committee. This committee will guide outreach efforts of Recollection Wisconsin and its partners (such as our historical society) to connect with educators and increase educators' awareness of and access to the Recollection Wisconsin collection. The first phase of the Committee's work will focus on K-12 educators. The goal is to connect educators to our museum's collection for use in class instruction on specific topics.

Looking at Pictures

It's hard to know when we may resume our project of collecting scans of photographs that people are willing to share with the museum. To date we have accumulated an interesting collection of material from Langlade County. Here is the original architect's drawing for the layout of the Bass Lake Golf Course. It was originally only supposed to be a nine-hole course. Note that the Chicago and Northwestern track went right past the first and ninth holes.

Watch for notices that we have resumed our routine of setting up at the library on the afternoon of the first Monday of the month to make copies of what people bring in.



History Repeats

It has been said that history repeats itself or, at least rhymes. Knowing our history helps put current events in perspective. We may learn how to handle current situations or perhaps how not to handle them. It helps to know that we have faced similar situations before.

The pandemic of COVID-19 is the source of illness and anxiety around the world. Slightly more than 100 years ago, the 1918 Influenza pandemic killed between 50-100 million people world-wide. Langlade County was not spared.

Record keeping and diagnostics were not as good as today and statistics may not be reliable but by the end of October, 1918 there were over 400 cases confirmed in Antigo and about 150 in Elton and White Lake.

Wisconsin became the first state to mandate school closings. Other public venues and events in Antigo were closed and cancelled, including churches, movie theaters, Sunday School classes. Even funeral services were curtailed and visits to hospital patients forbidden. Homes with a sick resident had to place a sign in the window on which was written “INFLUENZA”

Often several members of a household were afflicted and no one was healthy enough to care for the family. The Red Cross helped by raising funds for an early version of “meals on wheels”. The Domestic Science classrooms at the high school were used by the teacher and eighth grade girls to prepare meals. Boy Scouts would deliver the food to families.

By mid-November the number of cases seemed to be dropping and by the end of the month the Palace Theater reopened. Churches, lodges and other public places also opened. Schools did not reopen until December 2, after being closed for seven weeks.

By mid-December normalcy began to return to Langlade County and people were getting into the spirit of Christmas. It is impossible to tell how many people in Langlade County caught the flu or died of it. But from October to December of 1918, when people might have been celebrating the end of World War I, Thanksgiving, and Christmas they lived in semi isolation and fear of a deadly virus that swept the globe.

Keep a Journal: Life in the time of COVID-19

Recently a story we posted on Facebook about the influenza pandemic of 1918 in Antigo received several interesting responses. A woman told how her mother, at age 4, lost her mother on Nov. 11, 1918 and when the bugle played on Armistice Day, she thought of her mother. Another wrote that she was named in honor of a family friend and neighbor who succumbed. A man told how his great grandfather, 14 at the time, went with his brothers to check on individuals in rural Langlade County, mostly around Elmhurst, and often found individuals who had succumbed.

The Wisconsin Historical Society is looking to document stories of how people are coping with today's

pandemic. If you have stories you wish to share about how COVID-19 affects your life you may work with our museum or consult the Wisconsin Historical Society site about the project at <https://www.wisconsin-history.org/bighistory-ishappening>

Stories about how you coped with isolation, job and family changes, school, etc. are all of interest. No story is too trivial. Start keeping a journal. Future historians will thank you.



Just a few of the more than 1,000 who have agreed to contribute to the Wisconsin Historical Society's bighistoryishappening event.

The Style of Fifth Avenue

Plans are in place to redesign part of Fifth Avenue in Antigo. The street has always been, and still is, important to Antigo.

When Francis Deleglise settled his family here in 1878, they settled on the banks of Spring Brook. Earlier Willard Ackley, Langlade County's first white settler, and his Ojibwe wife had established a trading post to the west (near Riverview Golf Course). The Deleglise family depended on the benevolence of the Ackley family for many things and there was a well-worn path between the two homes. As Antigo grew that path became Fifth Avenue. With the growth and importance of the railroad with the depot on Dorr St. at Fifth Ave. the street soon became the center of shopping activity.

Early buildings reflected the styles of the late 19th and early 20th century – brick, Victorian style structures. Some of that style is still visible, particularly the upper stories even though the street level facades have changed.

But styles changed in the 1930s and particularly after World War II. Changes came about in part due to changing tastes and also due to technological advances that made large shatter-proof glass store front windows possible. Window displays aspired to be works of art and shoppers could see what was being offered before even entering the store. While not always architectural gems, some buildings are interesting and too often underappreciated. The style of Fifth Ave. has evolved over the years and will continue to do so. We should enjoy and preserve the diversity

First Federal Bank in 1967 with a redesigned façade which was, in effect, a billboard for the bank.

M Krom & Sons Department Store in 1935 was very modern with large plexiglass windows that clearly displayed merchandise.

Street scene, 1966 shows a variety of retail outlets and a busy shopping scene.



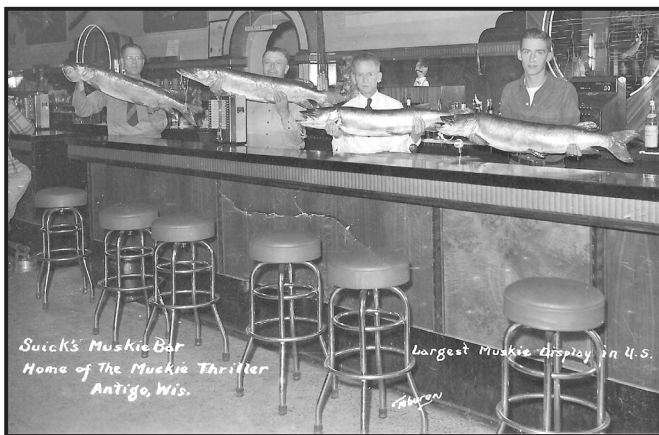
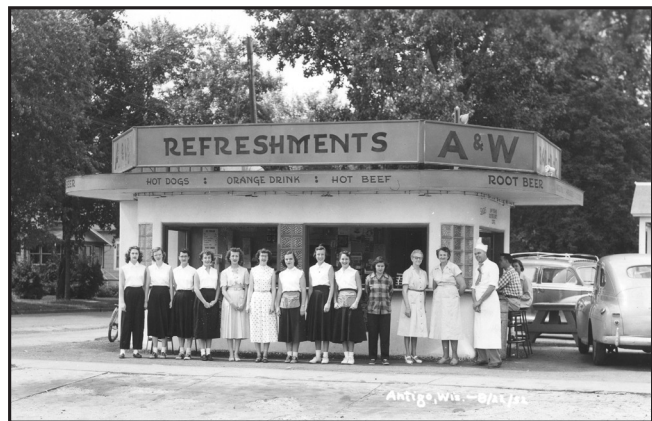
Eating Out

We all enjoy going out to eat with friends - something not possible in a time of social isolation. Below are various spots where people once socialized.

Top Row (left to right) Unknown soda fountain, A & W Drive In (on Superior near 4th)

Middle Row (l to r): Powell's Club (north of Antigo), Club Rolling (south of Antigo)

Bottom Row (l to r) Suick's Muskie Bar (5th Ave), Dixie (5th Ave. still there)



ADDRESS:

404 Superior St., Antigo, WI 54409
 Phone: (715) 627-4464
 Email: lchs@dwave.net
 web site: www.langladehistory.com

MUSEUM HOURS:

October 1 to May 1,
 Thursday to Saturday

May 1 to October 1,
 Tuesday to Saturday

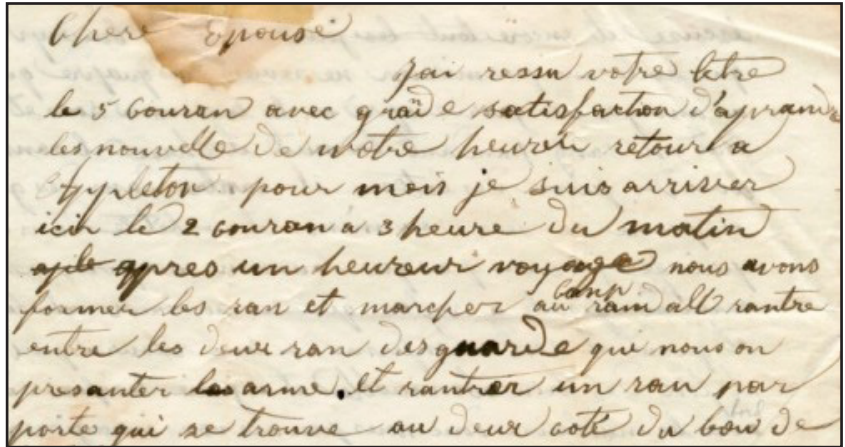
10 a.m. to 4 p.m.

MEMBERSHIP DUES

Individual, 1 year: \$25
 Individual, 3 years: \$50
 Family, 1 year: \$30
 Family, 3 years: \$70
 Junior (18 or younger), 1 year: \$3
 Business, 1 year: \$100
 Life Member: \$250

ITEM FROM THE MUSEUM:

A portion of a letter, in French, written by Francis Deleglise in 1861 to his wife while he was a Civil War soldier training in Camp Randall. Deleglise's Civil War letters to his family are in the museum and online through Recollection Wisconsin, including a description of his experiences during the Battle at Gettysburg.



404 Superior Street
 Antigo WI, 54409